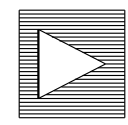
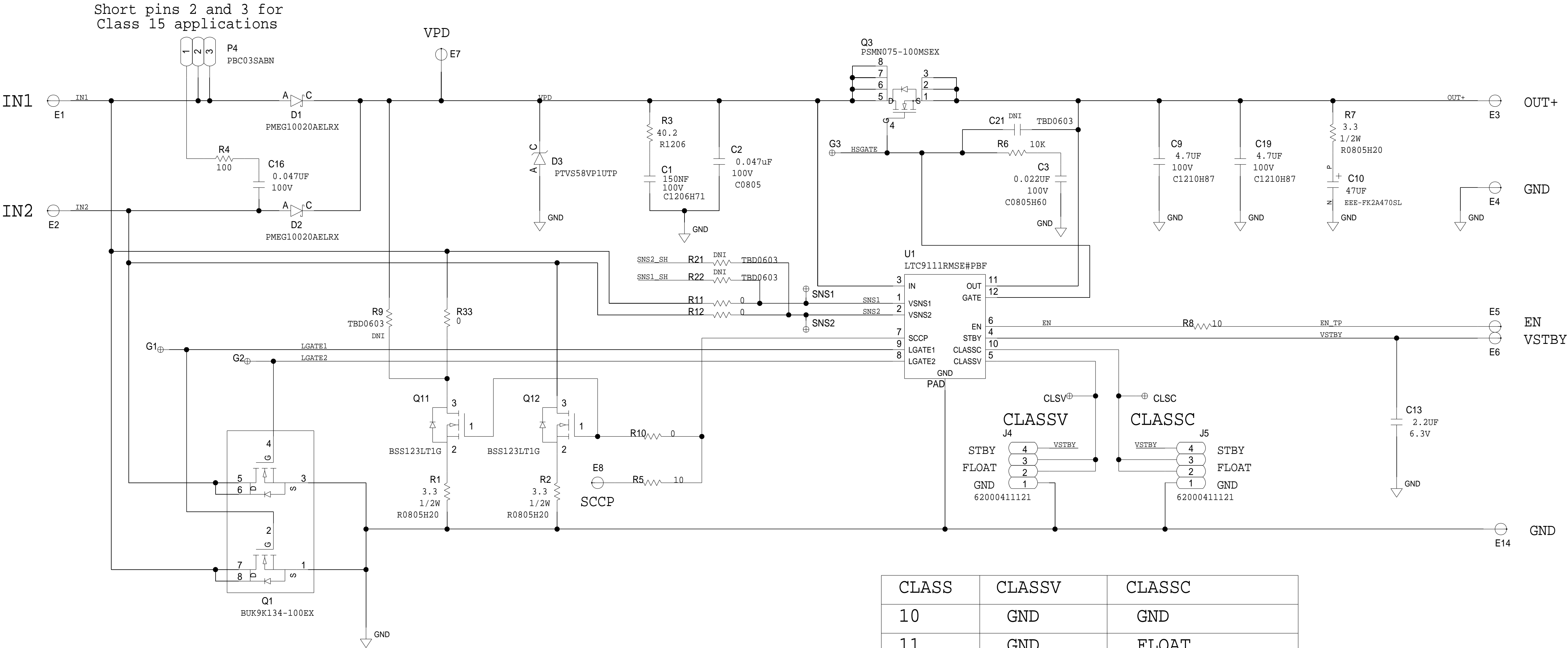


8		7		6		5		4		3		2		1									
D	THIS DRAWING IS THE PROPERTY OF ANALOG DEVICES INC. IT IS NOT TO BE REPRODUCED OR COPIED, IN WHOLE OR IN PART, OR USED IN FURNISHING INFORMATION TO OTHERS, OR FOR ANY OTHER PURPOSE DETRIMENTAL TO THE INTERESTS OF ANALOG DEVICES. THE EQUIPMENT SHOWN HEREON MAY BE PROTECTED BY PATENTS OWNED OR CONTROLLED BY ANALOG DEVICES.					JUMPER TABLE										REVISIONS							
	REV	DESCRIPTION		DATE	APPROVED																		
	A	INITIAL RELEASE		06JUL21	V.GREGORIO																		
	B	AS PER ECR-108790		13JUL22	V.GREGORIO																		
	C	AS PER ECR-110104		25AUG22	V.GREGORIO																		
	C1	AS PER ECR-114436		17MAY23	D.REYES																		
	RELAY CONTROL CHART					* SEE ASSEMBLY INSTRUCTIONS																	
	CONTROL	CODE	DEVICE	FUNCTION	CONNECTOR																		
C																							
B																							
																A							
8		7		6		5		4		3		2		1									
P.O SPEC.		BK/BD SPEC.		SOCKET OEM		OEM PART#		HANDLER		TEMPLATE ENGINEER -		DATE 06JUL21		SCHEMATIC		 ANALOG DEVICES							
										06JUL21													
										COMPONENT ENGINEER D.TAMISEN		06JUL21		HW TYPE : Customer Evaluation Z Product(s): EVAL-LTC9111-AZ : N/A PACKAGE : LeadCount-lead BodySize PackageType-family : Pitch-pitch StyleVendor Style <User Define> <User Define> <User Define>									
										TEST PROCESS -													
										HARDWARE RELEASE K.JABATAN		06JUL21											
										DESIGNER N.CORDOVA		06JUL21											
										PTD ENGINEER V.GREGORIO		06JUL21											
												CHECKER -				UNLESS OTHERWISE SPECIFIED DIMENSIONS ARE IN INCHES		TOLERANCES					
																DECIMALS X.XX +0.010 X.XXX +0.005		FRACTIONS +1/32		ANGLES +2			
																SIZE D		SCALE 1:1		CODE ID NO. CodeID		SHEET 1 OF 3	

LTC9111 SPoE PD CONTROLLER

REVISIONS			
REV	DESCRIPTION	DATE	APPROVED



CLASS	CLASSV	CLASSC
10	GND	GND
11	GND	FLOAT
12	GND	STBY
13	STBY	GND
14	STBY	FLOAT
15	STBY	STBY



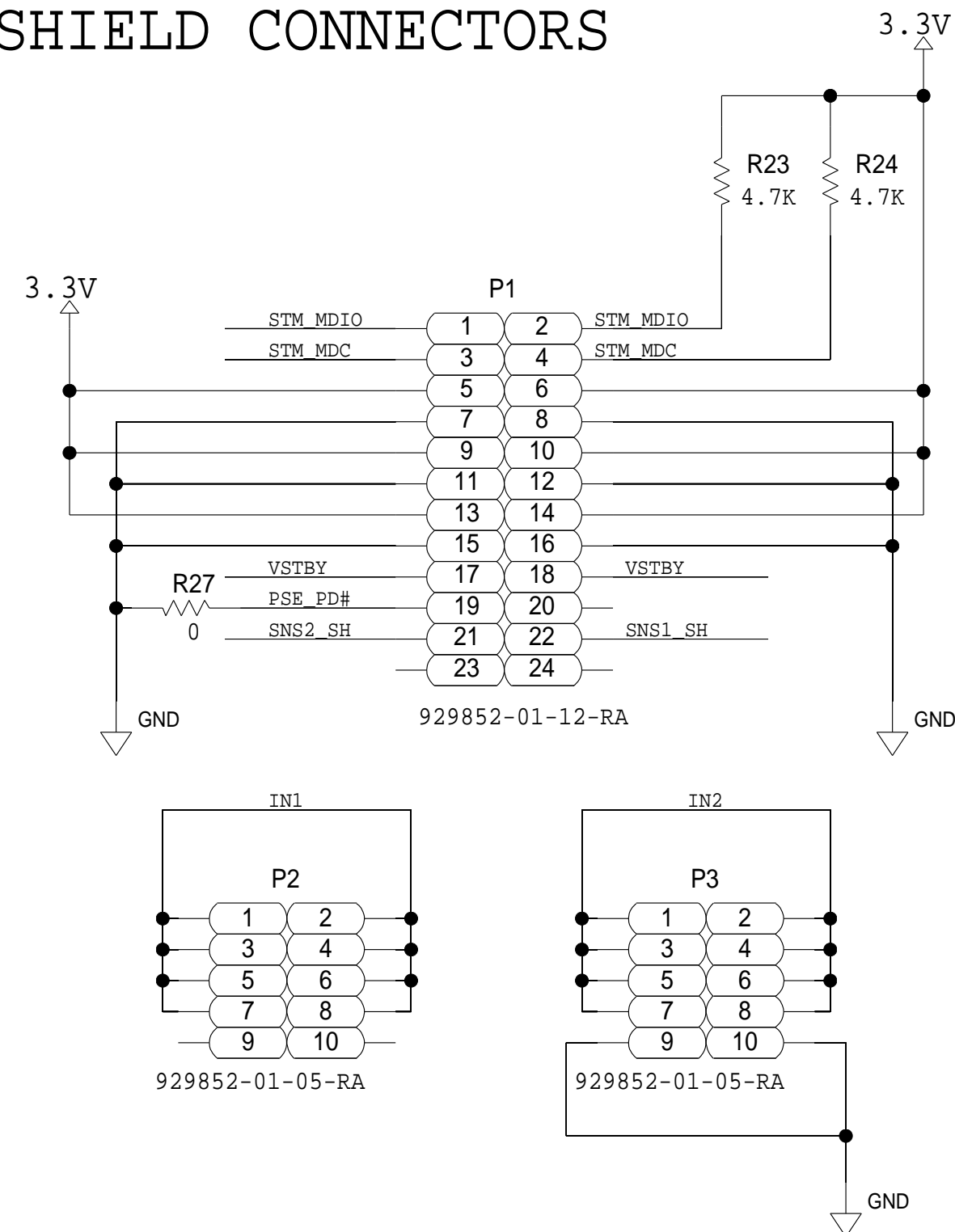
THIS DRAWING IS THE PROPERTY OF ANALOG DEVICES INC. IT IS NOT TO BE REPRODUCED OR COPIED IN WHOLE OR IN PART, OR USED IN FURNISHING INFORMATION TO OTHERS, OR FOR ANY OTHER PURPOSE DETRIMENTAL TO THE INTERESTS OF ANALOG DEVICES. THE EQUIPMENT SHOWN HEREON MAY BE PROTECTED BY PATENTS OWNED OR CONTROLLED BY ANALOG DEVICES.

SCHEMATIC			
HW TYPE : Customer Evaluation Z Product(s): EVAL-LTC9111-AZ : N/A			
DESIGN VIEW <DESIGN_VIEW>	DRAWING NO. 02_067228	REV C	
PTD ENGINEER V.GREGORIO	SIZE D	SCALE 1:1	SHEET 2 OF 3

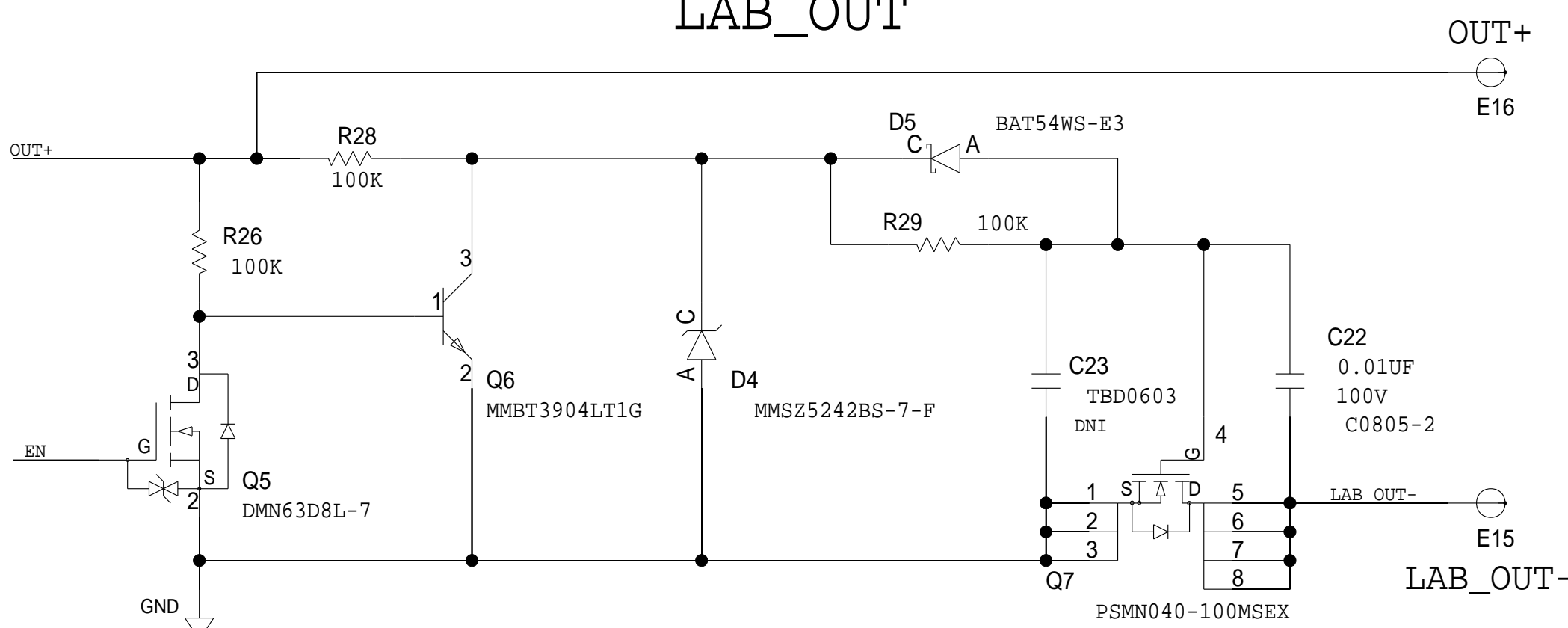
EVAL PURPOSE COMPONENTS ONLY

REVISIONS			
REV	DESCRIPTION	DATE	APPROVED

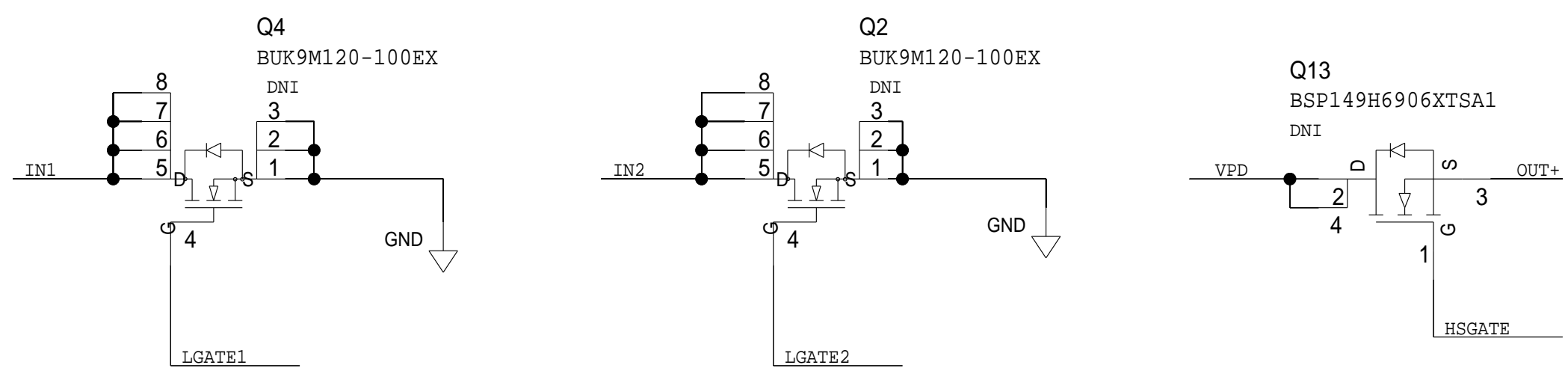
SHIELD CONNECTORS



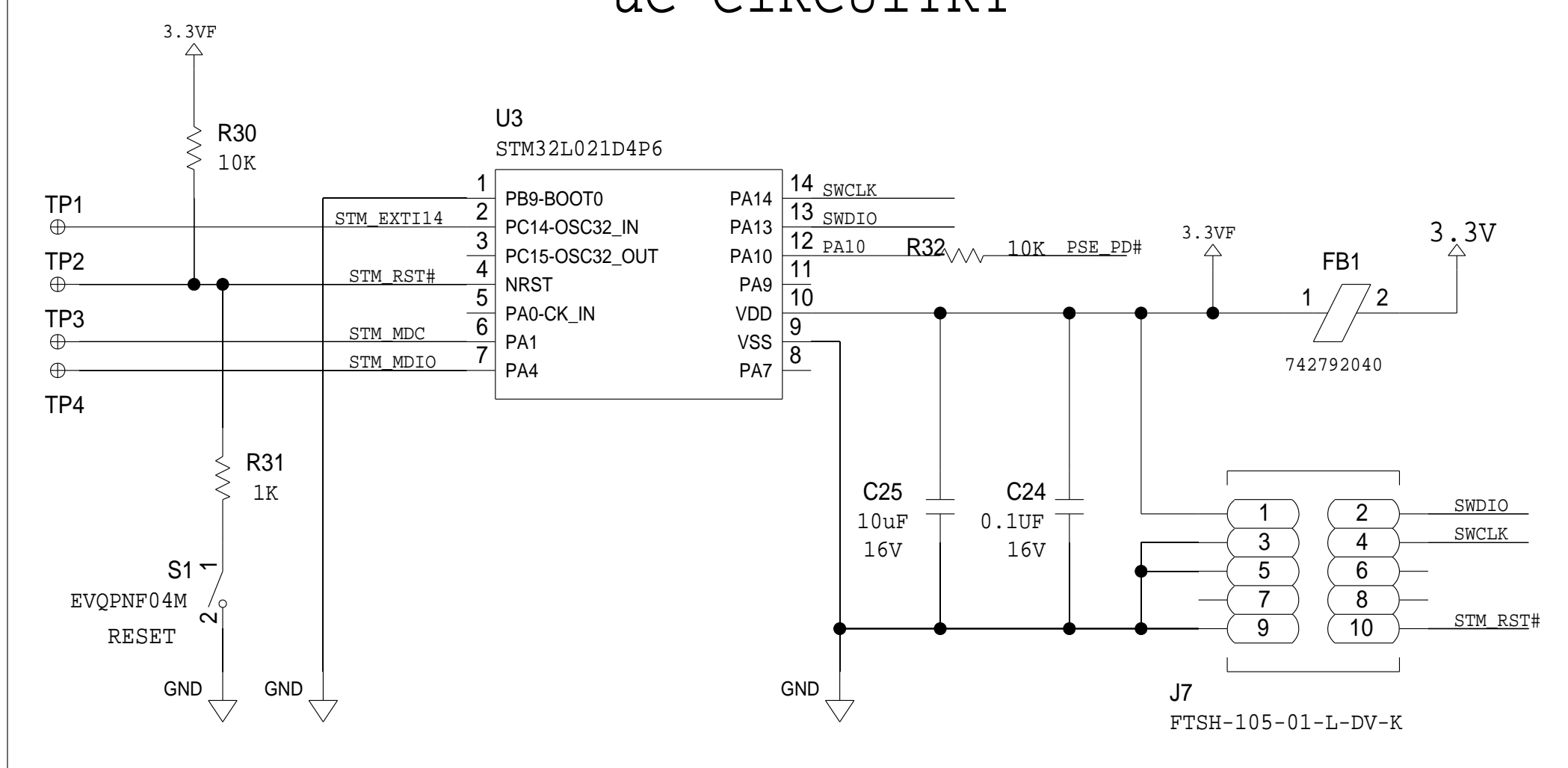
LAB_OUT



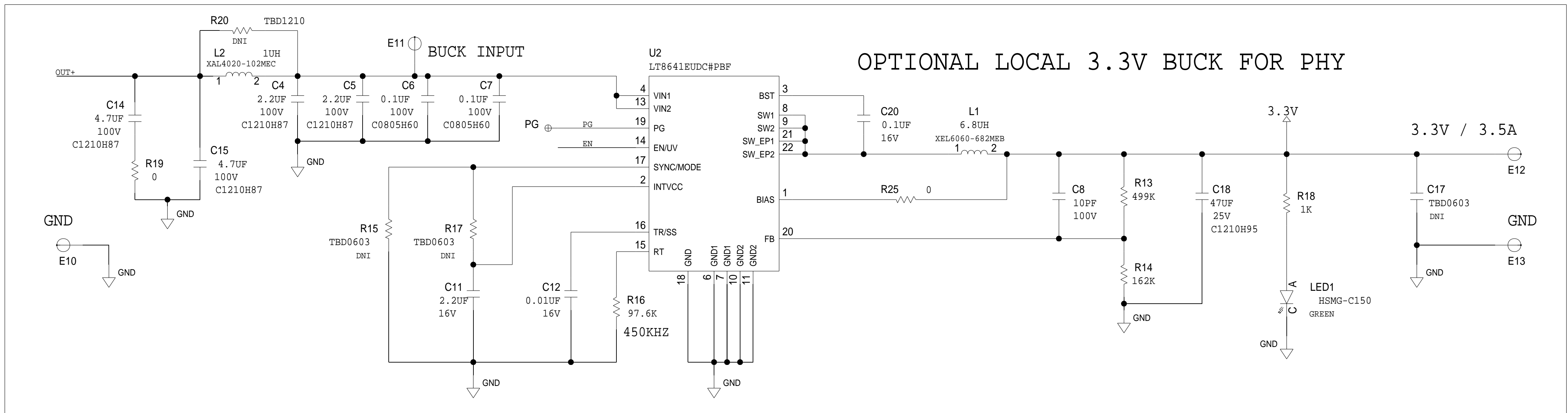
ALTERNATIVE FET FOOTPRINTS



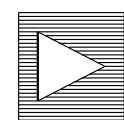
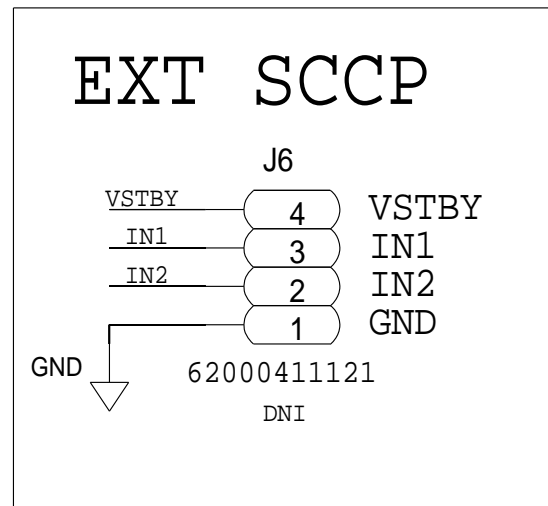
uC CIRCUITRY



OPTIONAL LOCAL 3.3V BUCK FOR PHY



EXTERNAL SCCP CONNECT



ANALOG
DEVICES

THIS DRAWING IS THE PROPERTY OF ANALOG DEVICES INC.
IT IS NOT TO BE REPRODUCED OR COPIED IN WHOLE OR
IN PART, OR USED IN FURNISHING INFORMATION TO OTHERS,
OR FOR ANY OTHER PURPOSES DETRIMENTAL TO THE INTERESTS
OF ANALOG DEVICES.
THE EQUIPMENT SHOWN HEREON MAY BE PROTECTED BY PATENTS
OWNED OR CONTROLLED BY ANALOG DEVICES.

SCHEMATIC

HW TYPE : Customer Evaluation Z
Product(s): EVAL-LTC9111-AZ
: N/A

DESIGN VIEW
<DESIGN_VIEW>

PTD ENGINEER
V.GREGORIO

DRAWING NO.
02_067228

SIZE
D

SCALE
1:1

SHEET 3

OF 3

REV
C